



ULTRA-GLO™ CERAMIC INFRARED FOODWARMERS

Models UGA-18, -24, -30, -36, -42, -48, -54, -60, -66, -72 UGAH-18, -24, -30, -36, -42, -48, -54, -60, -66, -72
 UGAL-18, -24, -30, -36, -42, -48, -54, -60, -66, -72 UGAHL-18, -24, -30, -36, -42, -48, -54, -60, -66, -72

Hatco Ultra-Glo Ceramic Foodwarmers ensure maximum flavor, safety and holding time without continuing to cook the food. The prefocused heat pattern provides an increased pyramidal dimension, enveloping the food holding area not just side-to-side, but front-to-back. Heat is concentrated at the edges where heat loss is the greatest.

FLEXIBILITY

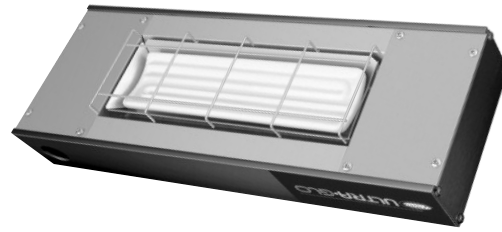
The increased height of the ceramic heat source offers improved operational working clearances, giving the chef and server an improved ergonomic environment in which to work.

With a variety of widths and options, Ultra-Glo Ceramic Foodwarmers are adaptable to any location and configuration. Back or front-of-the-house use, open kitchen concepts or buffet lines, Ultra-Glo is available in continuous single or dual aluminum housings up to 6' (1829 mm), with or without lights. Angle brackets come standard, non-adjustable tubular stands are optional. Ultra-Glo models have a clear anodized finish and are available in optional Gloss Finishes or standard *Designer* colors.

QUALITY

The following features assure the finest performance for years to come:

- Available in widths from 18" to 72" (457-1829 mm).
- Sturdy extruded aluminum housings eliminate sagging.
- Prefocused heat maintains safe serving temperatures longer without continuing to cook the food.
- Variety of models, configurations and colors provide unlimited flexibility.
- Optional coated shatter-resistant incandescent lights enhance brilliant product display while safeguarding food from bulb breakage.



Model UGAH-18
with remote control box
(not shown) and optional
translucent gloss finish



Model UGAL-60



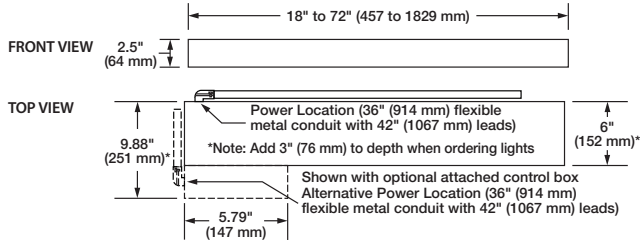
HATCO CORPORATION P.O. Box 340500 Milwaukee, WI 53234-0500 U.S.A.
 (800) 558-0607 • (414) 671-6350 • Fax (800) 543-7521 • Int'l. Fax (414) 671-3976
www.hatcocorp.com • E-mail: equipsales@hatcocorp.com

CERAMIC HEATING ELEMENTS GUARANTEED AGAINST
 BURNOUT FOR ONE YEAR.



ULTRA-GLO™ CERAMIC INFRARED FOODWARMERS

Models UGA-18, -24, -30, -36, -42, -48, -54, -60, -66, -72 UGAH-18, -24, -30, -36, -42, -48, -54, -60, -66, -72
 UGAL-18, -24, -30, -36, -42, -48, -54, -60, -66, -72 UGAHL-18, -24, -30, -36, -42, -48, -54, -60, -66, -72



SPECIFICATIONS: Single Models - Aluminum

STANDARD WATT	WATTS	AMPS	HIGH WATT	WATTS	AMPS	WIDTH	SHIPPING WEIGHT*
UGA-18	120V 500	4.2	UGAH-18	120V 650	5.4	18" (457 mm)	9 lbs. (4 kg)
	208V 490	2.4		208V 675	3.2		
	240V 500	2.1		240V 650	2.7		
UGA-24	120V 650	5.4	UGAH-24	120V 750	6.3	24" (610 mm)	10 lbs. (5 kg)
	208V 675	3.2		208V 750	3.6		
	240V 650	2.7		240V 750	3.1		
UGA-30	120V 900	7.5	UGAH-30	120V 1125	9.4	30" (762 mm)	11 lbs. (5 kg)
	208V 840	4.0		208V 1125	5.4		
	240V 900	3.8		240V 1125	4.7		
UGA-36	120V 1000	8.3	UGAH-36	120V 1300	10.8	36" (914 mm)	12 lbs. (5 kg)
	208V 980	4.7		208V 1350	6.5		
	240V 1000	4.2		240V 1300	5.4		
UGA-42	120V 1200	10.0	UGAH-42	120V 1500	12.5	42" (1067 mm)	13 lbs. (6 kg)
	208V 1120	5.4		208V 1500	7.2		
	240V 1200	5.0		240V 1500	6.3		
UGA-48	120V 1500	12.5	UGAH-48*	-	-	48" (1219 mm)	14 lbs. (6 kg)
	208V 1470	7.1		208V 2025	9.7		
	240V 1500	6.3		240V 1950	8.1		
UGA-54*	120V 1470	7.1	UGAH-54*	120V 2250	10.8	54" (1372 mm)	16 lbs. (7 kg)
	208V 1500	6.3		208V 2250	9.4		
	240V 1500	6.3		240V 2250	9.4		
UGA-60*	120V 1960	9.4	UGAH-60*	120V 2700	13.0	60" (1524 mm)	17 lbs. (8 kg)
	208V 2000	8.3		208V 2600	10.8		
	240V 2000	8.3		240V 2600	10.8		
UGA-66*	120V 1960	9.4	UGAH-66*	120V 2700	13.0	66" (1676 mm)	19 lbs. (9 kg)
	208V 2000	8.3		208V 2600	10.8		
	240V 2000	8.3		240V 2600	10.8		
UGA-72*	120V 1960	9.4	UGAH-72*	120V 3000	14.4	72" (1829 mm)	20 lbs. (9 kg)
	208V 2000	8.3		208V 3000	12.5		
	240V 2000	8.3		240V 3000	12.5		

* Does not include RMB. Add 2-8 lbs. (1-3 kg) to shipping weight depending on size of RMB.

• Not available in 120 volt.

DIMENSIONS

Single Models with Remote Control Enclosure:

18"-72"W x 6"D▲ x 2.5"H (457-1829 x 152 x 64 mm).

Single Models with Attached Control Box:

18"-72"W x 9.88"D▲ x 2.5"H (457-1829 x 251 x 64 mm).

Remote Control Enclosure: 5.5", 9", 14", 16", or

20"W x 3"D x 2.5"H (140, 229, 356, 406, or 508 x 76 x 64 mm).

Attached Control Box: 5.79" (single).

▲ Add 3" (76 mm) to depth when ordering single model units with lights.

OPTIONS (NOT FOR RETROFIT)

- Designer Colors: Warm Red, Black, Gray Granite, White Granite, Navy Blue, Hunter Green, Antique Copper
- Gloss Finishes: Gleaming Gold, Glossy Gray, Bold Black, Radiant Red, Brilliant Blue
- Non-standard colors are non-returnable
- Remote Control Enclosure

PRODUCT SPECS - Infrared Foodwarmer

The Infrared Foodwarmer shall be an Ultra-Glo™, manufactured by the Hatco Corporation, Milwaukee, WI 53234 U.S.A.

The Foodwarmer shall be an Ultra-Glo Model ..., rated at ... watts, ... volts, single phase and be ... inches (millimeters) in overall width.

SPECIFICATIONS: Single Models with Lights - Aluminum

STANDARD WATT	WATTS	AMPS	HIGH WATT	WATTS	AMPS	WIDTH	SHIPPING WEIGHT*
UGAL-18	120V 560	4.7	UGAHL-18	120V 710	5.9	18" (457 mm)	12 lbs. (5 kg)
	120/208V 550	2.9		120/208V 735	3.7		
	120/240V 560	2.6		120/240V 710	3.2		
	240V 560	2.3		240V 710	3.0		
UGAL-24	120V 770	6.4	UGAHL-24	120V 870	7.3	24" (610 mm)	13 lbs. (6 kg)
	120/208V 795	4.2		120/208V 870	4.6		
	120/240V 770	3.7		120/240V 870	4.1		
	240V 770	3.2		240V 870	3.6		
UGAL-30	120V 1020	8.5	UGAHL-30	120V 1245	10.4	30" (762 mm)	15 lbs. (7 kg)
	120/208V 960	5.0		120/208V 1245	6.4		
	120/240V 1020	4.8		120/240V 1245	5.7		
	240V 1020	4.3		240V 1245	5.2		
UGAL-36	120V 1180	9.8	UGAHL-36	120V 1480	12.3	36" (914 mm)	17 lbs. (8 kg)
	120/208V 1160	6.2		120/208V 1530	8.0		
	120/240V 1180	5.7		120/240V 1480	6.9		
	240V 1180	4.9		240V 1480	6.2		
UGAL-42	120V 1380	11.5	UGAHL-42	120V 1680	14.0	42" (1067 mm)	18 lbs. (8 kg)
	120/208V 1300	6.9		120/208V 1680	8.7		
	120/240V 1380	6.5		120/240V 1680	7.5		
	240V 1380	5.8		240V 1680	7.0		
UGAL-48	120V 1740	14.5	UGAHL-48*	-	-	48" (1219 mm)	20 lbs. (9 kg)
	120/208V 1710	9.1		120/208V 2265	11.7		
	120/240V 1740	8.3		120/240V 2190	10.1		
	240V 1740	7.3		240V 2190	9.1		
UGAL-54*	120V 1710	9.1	UGAHL-54*	120V 2490	12.8	54" (1372 mm)	22 lbs. (10 kg)
	120/208V 1740	8.3		120/208V 2490	11.4		
	240V 1740	7.3		240V 2490	10.4		
UGAL-60*	120V 2260	11.9	UGAHL-60*	120V 3000	15.5	60" (1524 mm)	23 lbs. (10 kg)
	120/208V 2300	10.8		120/208V 2900	13.3		
	120/240V 2300	9.6		120/240V 2900	12.1		
	240V 2300	9.6		240V 2900	12.1		
UGAL-66*	120V 2260	11.9	UGAHL-66*	120V 3000	15.5	66" (1676 mm)	25 lbs. (11 kg)
	120/208V 2300	10.8		120/208V 2900	13.3		
	120/240V 2300	9.6		120/240V 2900	12.1		
	240V 2300	9.6		240V 2900	12.1		
UGAL-72*	120V 2320	12.4	UGAHL-72*	120V 3360	15.5	72" (1829 mm)	27 lbs. (12 kg)
	120/208V 2360	11.3		120/208V 3360	14.1		
	120/240V 2360	9.8		120/208V†	3000	14.4	
	240V 2360	9.8		circ 1 280V	360	3.0	
				circ 2 120V			

■ Shaded areas contain electrical information for **Export units only**.

† Unit with multiple circuit connections. Each circuit may require a separate circuit breaker.

VOLTAGE

120, 208 and 240 volts, single phase. Models with Lights: 120, 120/208 and 120/240 volts, single phase.

MOUNTING REQUIREMENTS

Ultra-Glo Warmers must be mounted at least 1" (25 mm) below shelf.

Ultra-Glo Single Standard Watt Warmers should be positioned 14" to 18" (356-457 mm) above a non-metallic surface.

Single High Watt Warmers should be positioned 16" to 22" (406-559 mm) above a non-metallic surface.

- Non-Adjustable Tubular Stands – 14"-24" (356-610 mm)
- Incandescent Lights
- Halogen Bulbs in lieu of Standard Display Lights
- Extended Electrical Leads
- Remote Control Enclosure with Toggle Switch, Electronic Infinite Control, Relay, and Indicator Light (in lieu of attached control box)

The Ultra-Glo shall consist of an aluminum housing, ceramic heating element, and angle brackets for mounting. Remote Control Enclosure is recommended. Mounting heights between 14" to 18" (356-457 mm) single standard (low) watt, 16" to 22" (406-559 mm) single high watt.

24/7 parts and service assistance (U.S. and Canada only).

HATCO CORPORATION P.O. Box 340500 Milwaukee, WI 53234-0500 U.S.A. • (800) 558-0607 • (414) 671-6350
 Fax (800) 543-7521 • Int'l. Fax (414) 671-3976 • www.hatcocorp.com • E-mail: equipsales@hatcocorp.com